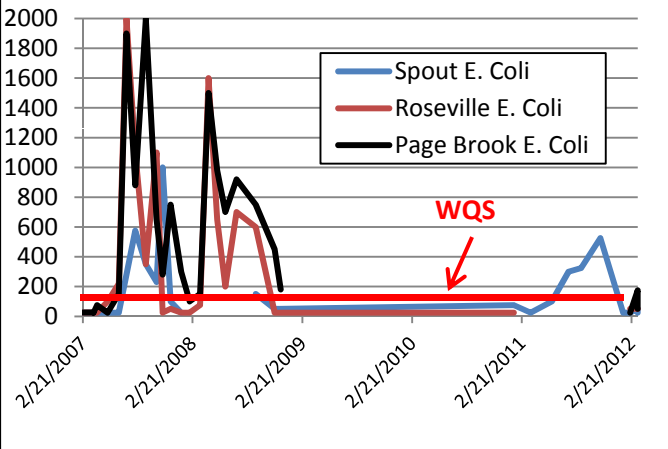
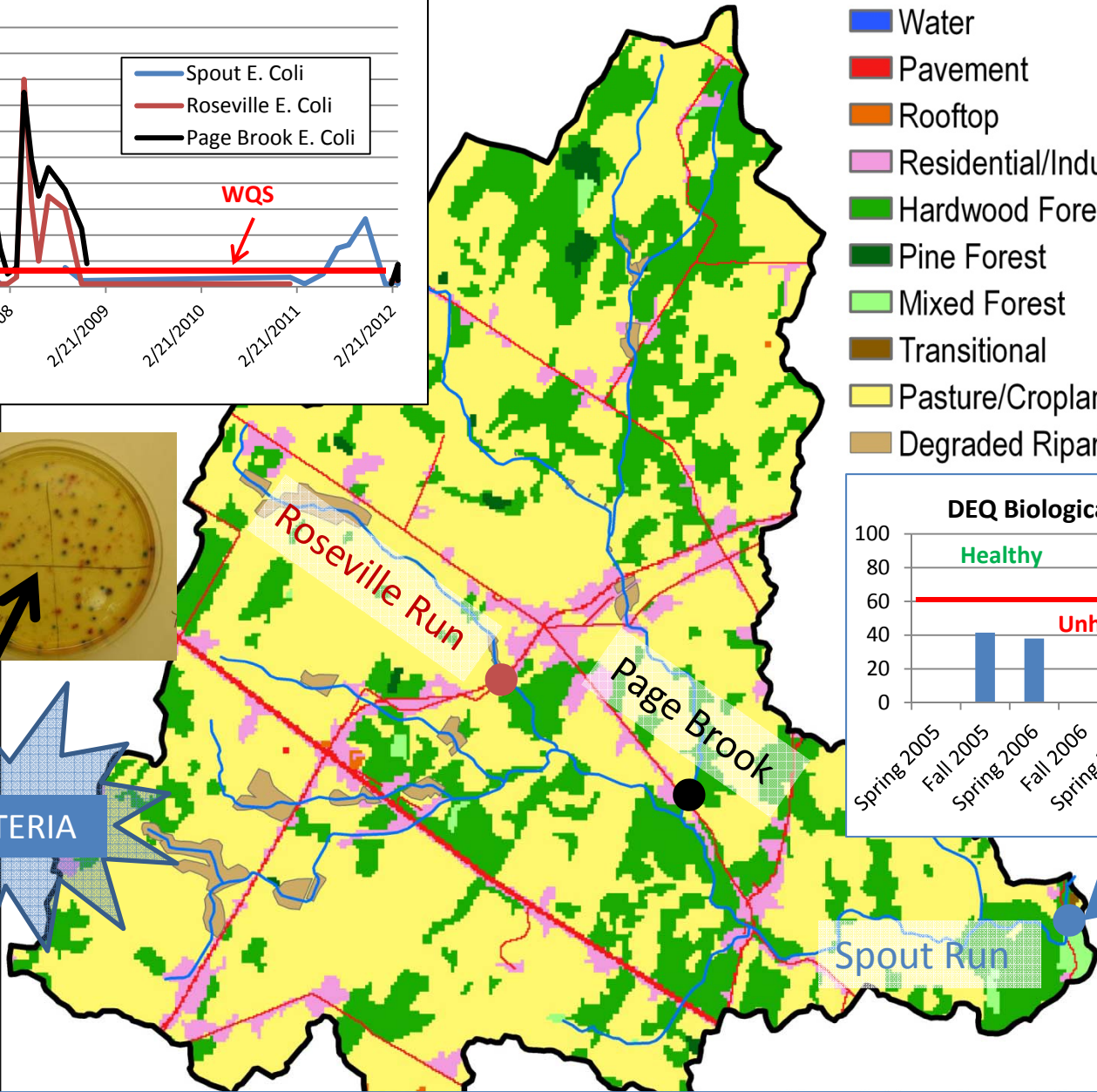
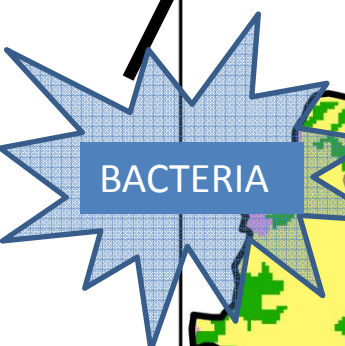
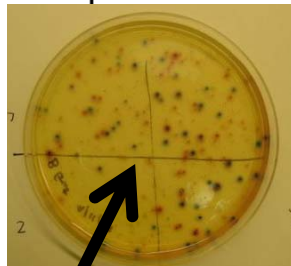
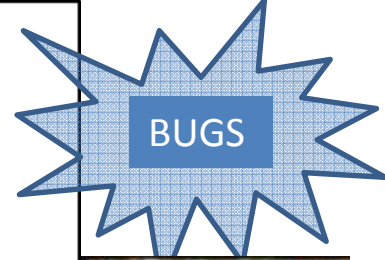


DEQ Bacteria Monitoring on Spout Run



2005 Land Cover

- Water
- Pavement
- Rooftop
- Residential/Industrial
- Hardwood Forest
- Pine Forest
- Mixed Forest
- Transitional
- Pasture/Cropland
- Degraded Riparian Pasture



DEQ Biological Monitoring on Spout Run

